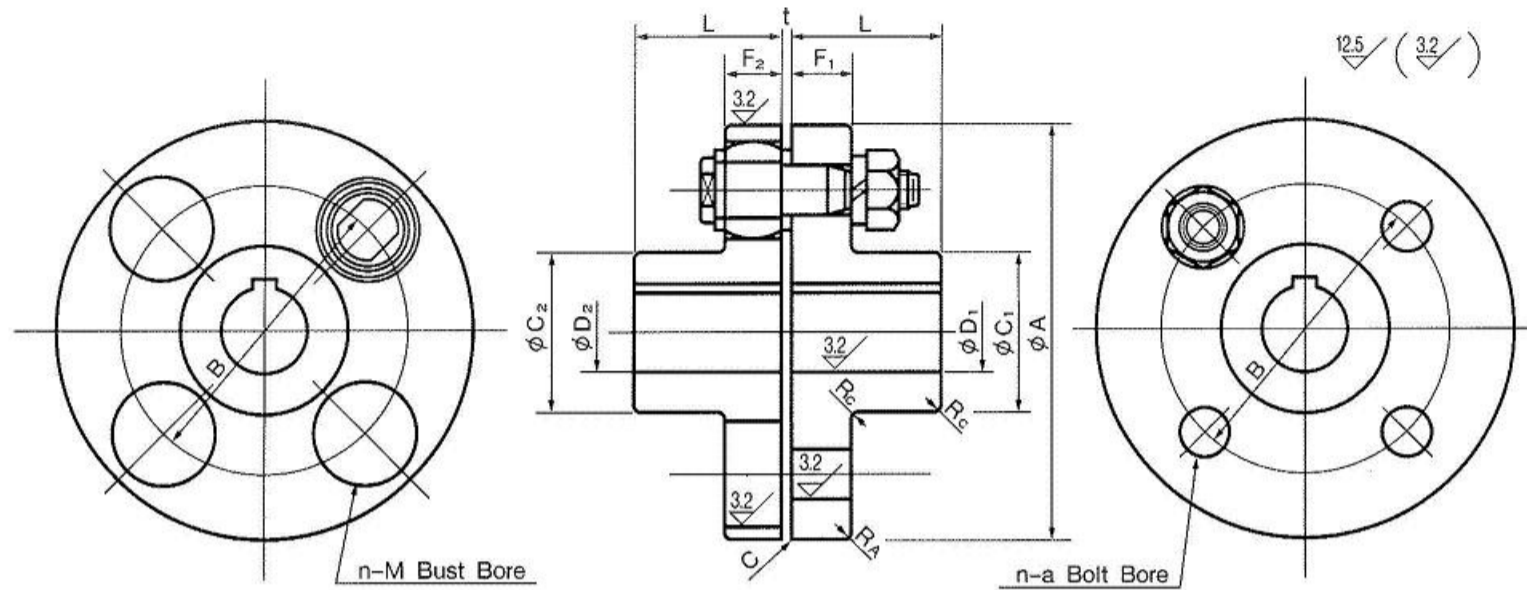


FLEXIBLE SHAFT COUPLINGS



Unit(mm)

OKS NO. A	D		L	C		B	F		n	a	M	(1) t	(2) Weight (one set)	Torque T kg f · m	Bolt Cat. #	Maximum r . p . m	
	Max DIAM. of shaft bore			Min. DIAM. of shaft bore	C ₁		C ₂	F ₁									F ₂
	D ₁	D ₂															
90	20	—	28	35.3	60	14	4	8	19	3	1.6	1.5	1	4000			
100	25	—	35.5	42.5	67	16	4	10	23	3	2.3	3.0	2	4000			
112	28	116	40	50	75	16	4	10	23	3	3.0	3.3	2	4000			
125	32	28	18	45	56	50	85	18	4	14	32	3	4.0	7.3	3	4000	
140	38	35	20	50	71	63	100	18	6	14	32	3	5.5	112.9	3	4000	
160	45	25	56	80	115	18	8	14	32	3	8.1	19.8	3	4000			
180	50	28	63	90	132	18	8	14	32	3	10.7	22.8	3	3500			
200	56	32	71	100	145	22.4	8	20	41	4	16.7	43.6	4	3200			
224	63	35	80	112	170	22.4	8	20	41	4	21.5	51.0	4	2850			
250	71	40	90	125	180	28	8	25	51	4	32.2	84.7	5	2550			
280	80	50	100	140	200	28	40	8	28	57	4	44.1	150	6	2300		
315	90	63	112	160	236	28	40	10	28	57	4	60.8	223	6	2050		
355	100	71	125	180	260	35.5	56	8	35.5	72	5	89.7	349	7	1800		
400	110	80	125	200	300	35.5	56	10	35.5	72	5	114.2	501	7	1600		
450	125	90	140	224	355	35.5	56	12	35.5	72	5	151.4	713	7	1400		
560	140	100	160	250	450	35.5	56	14	35.5	72	5	230	1052	7	1150		
630	160	110	180	280	530	35.5	56	18	35.5	72	5	304	1600	7	1000		

1. t indicates the gap between flanges when assembled, equivalent to the thickness of washer.
2. Weight represents the weight of full set coupling.
3. The boring diameter of couplings shall not exceed the max bore.