

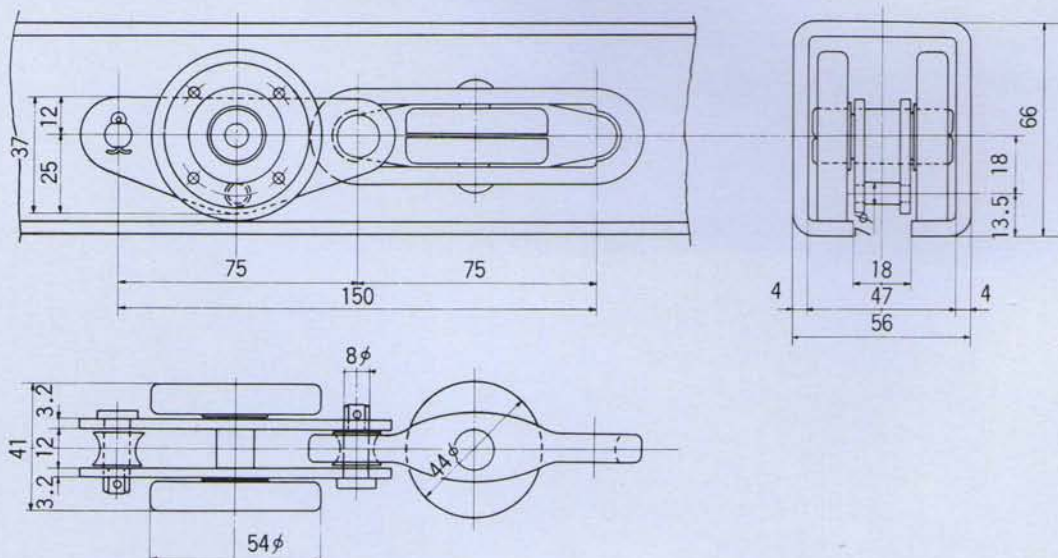
# HZ75 UNIVERSAL TROLLEY CHAIN

## CHAIN

For HZ75 Universal Trolley Chains, select one of the two kinds of chain ie. HZ-5AB (allowable chain pull: 400 kg) or HZ-3AB (chain pull: 300 kg) according to the chain pull required for your conveyor.

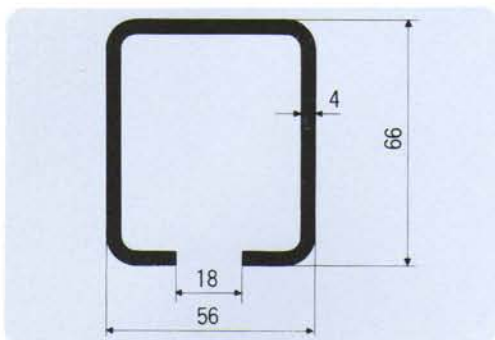
CHAIN SPECIFICATIONS

	HZ-3AB	HZ-5AB
Chain Pitch	75 mm	75 mm
Allowable Chain Pull	300 kg	400 kg
Ultimate Strength	3,200 kg	5,300 kg
Chain Weight per Meter	4.5 kg/m	4.5 kg/m
Capacity per Trolley	30 kg	30 kg
Load Space, Minimum	150 mm	150 mm



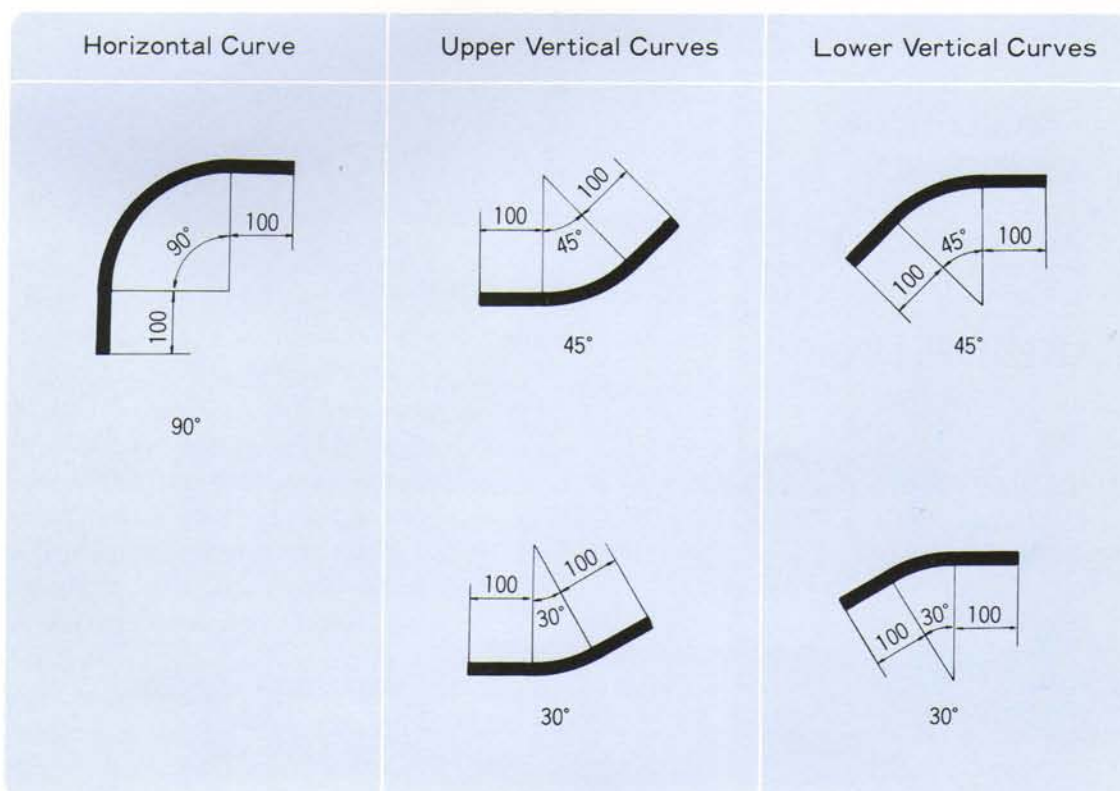
## STRAIGHT RAIL

The Universal Trolley Conveyor Rail is a square tubular section roll-formed of steel sheet and 5 meters long per piece.



## CURVED RAIL

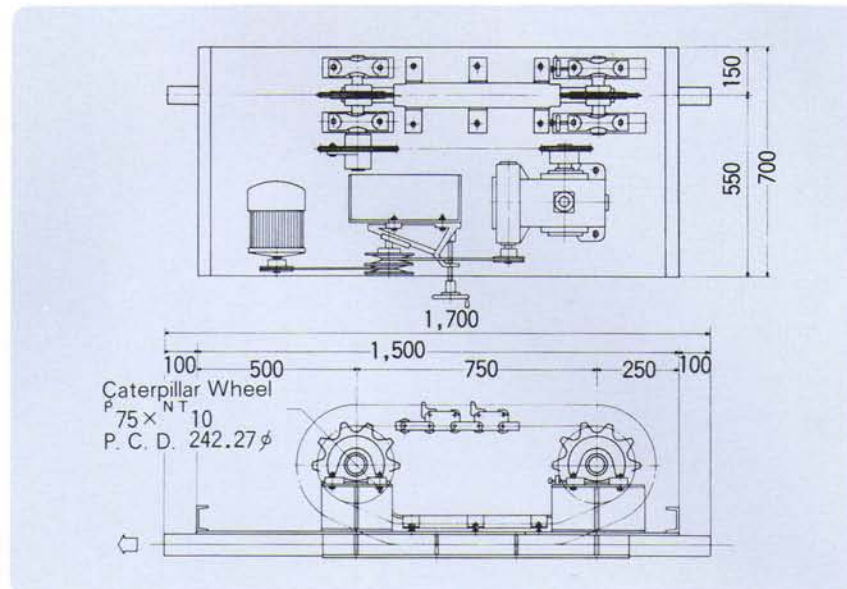
All Horizontal Curves and Vertical Curves are provided with radius 600 mm, 800 mm and 1,000 mm as standard. However, special radius or degree curves can be fabricated on order. Illustrated below are Horizontal Curve, Upper Vertical Curves and Lower Vertical Curves, and are in stock for prompt delivery.



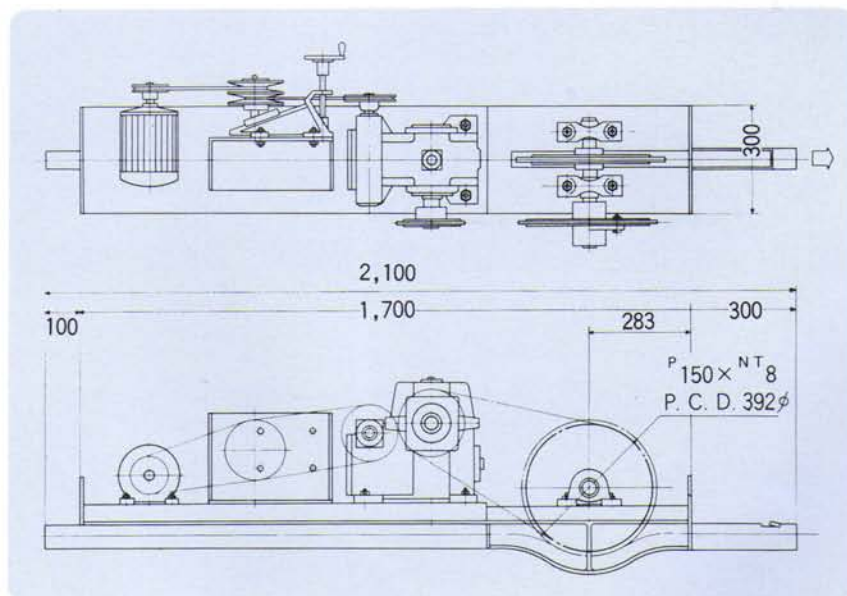
## DRIVE UNIT

As illustrated, 2 types of Drive Unit, the Caterpillar Drive and the Wheel Drive are designed to provide maximum flexibility. Each parts or components are standardized and are always in stock. The Drive Unit is also fabricated on order.

### CATERPILLAR DRIVE ▶

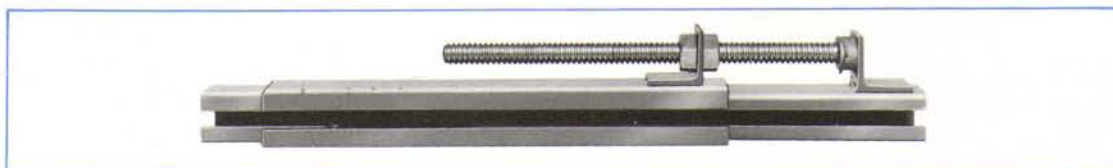


### WHEEL DRIVE (SPROCKET) ▶

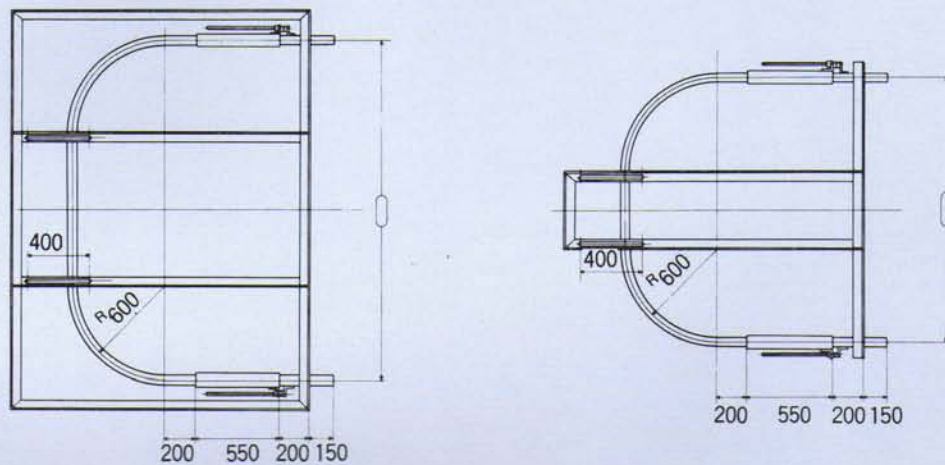
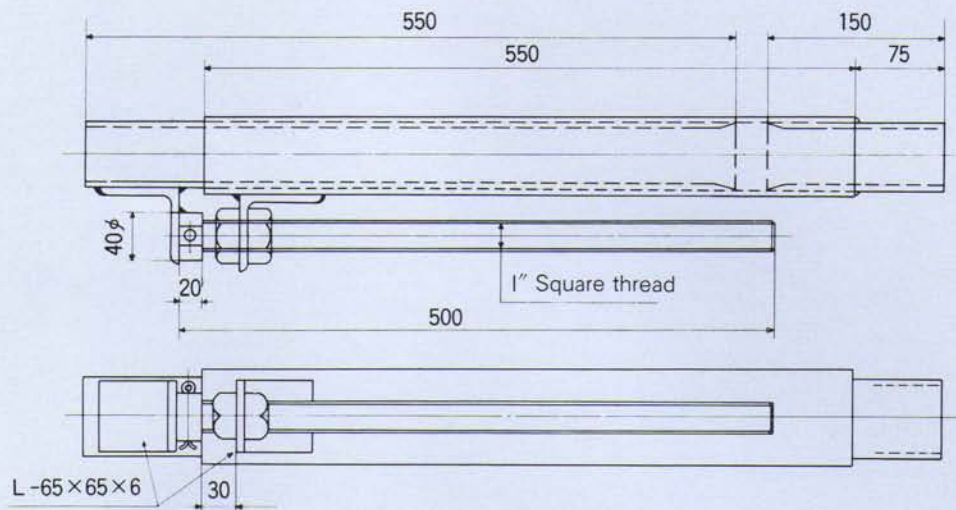


## TAKE-UP UNIT

The Screw type Take-up Unit as figured below is in stock as standard. One set is composed of a pair of right and left piece. The Counter Balance type or Spring type Unit is also engineered and fabricated on order.





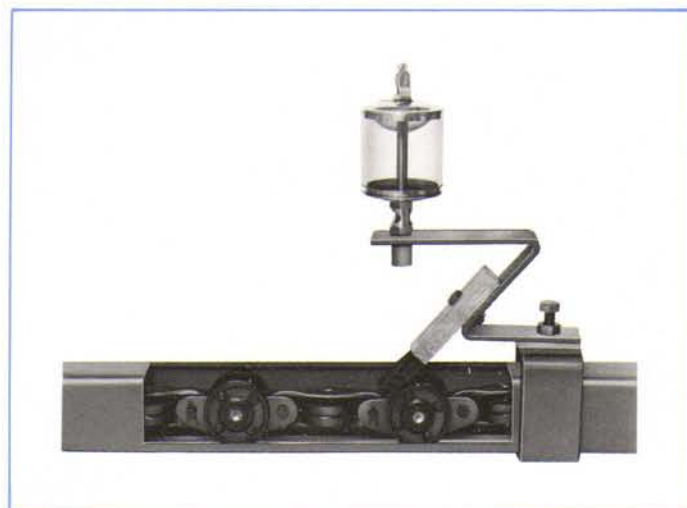


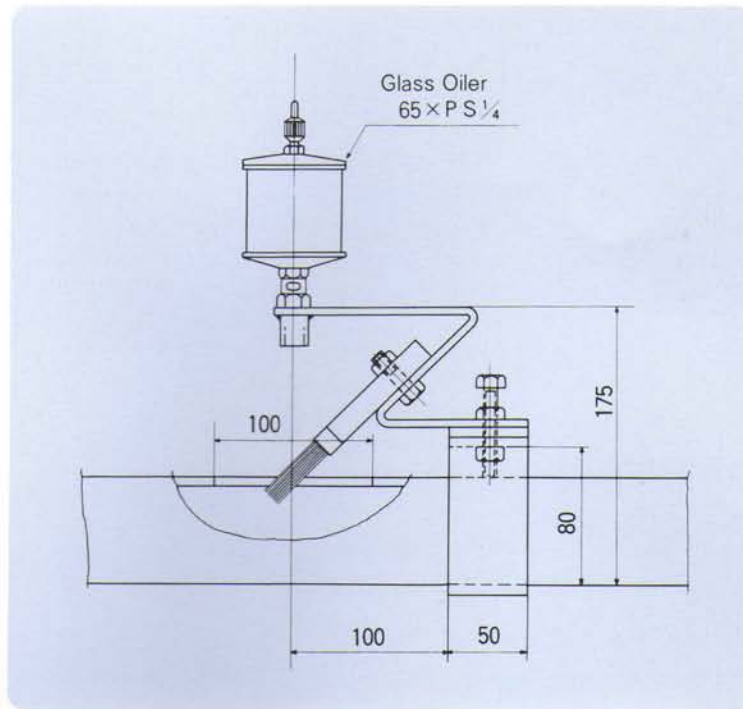
TAKE-UP FABRICATION

## CHAIN LUBRICATOR

The Drip or Brush type Lubricator as illustrated is required to be located at one or several points. For the first couple of months after installation, the Chain is required to be lubricated with enough amount of oil, but after that, it may be good to be lubricated every one month to every three months.

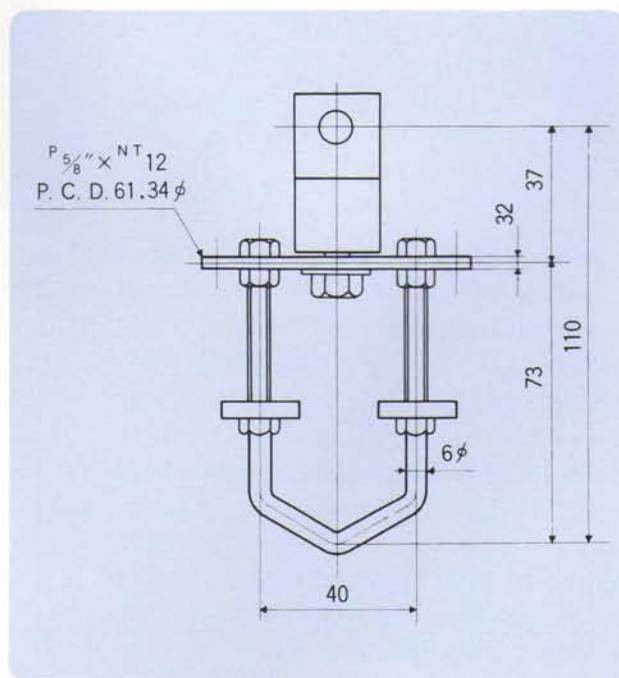
The proper dripping amount of lubricant can be regulated with adjustable valve to assure adequate lubrication without over-dripping from rail, and when chains are circulated, they are well lubricated. The Lubricator is suggested to be located before the Drive Unit or good for maintenance.





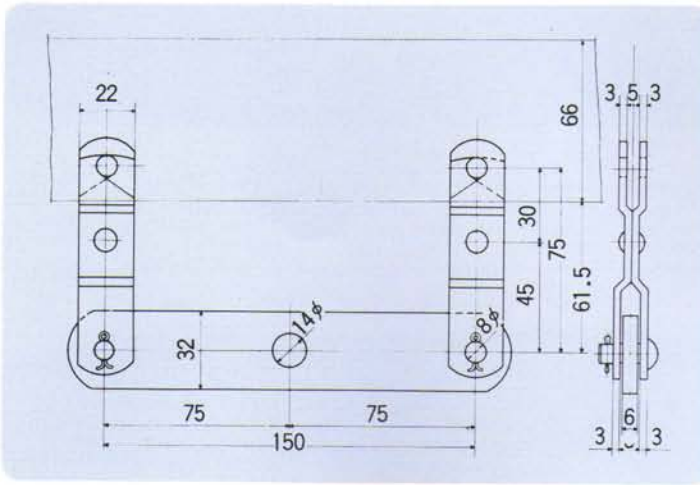
## HANGER

Hangers illustrated below are provided as standard. Special types can be engineered and fabricated on order.

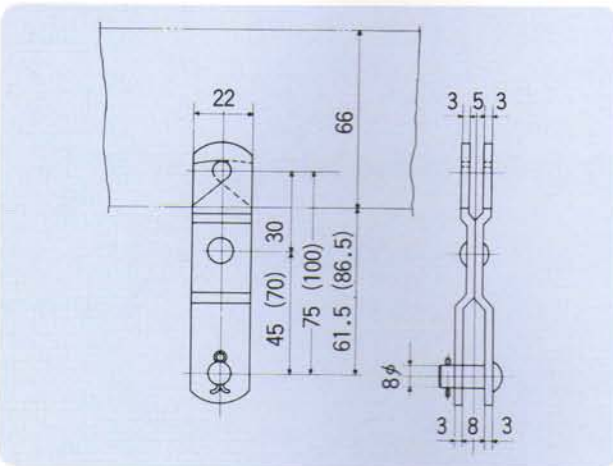


Rotator Type I

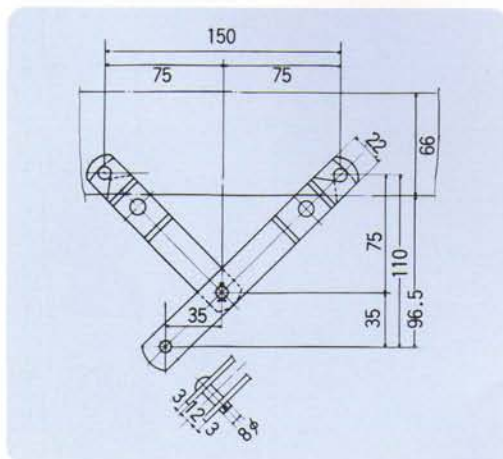
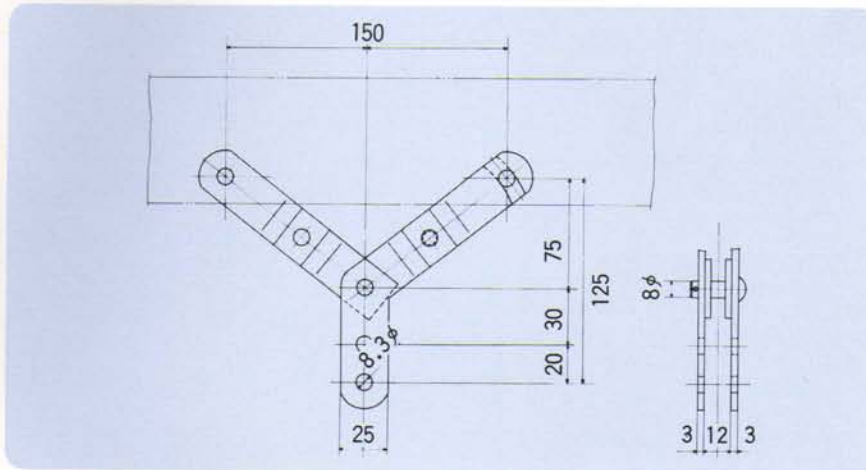
◆ Type U



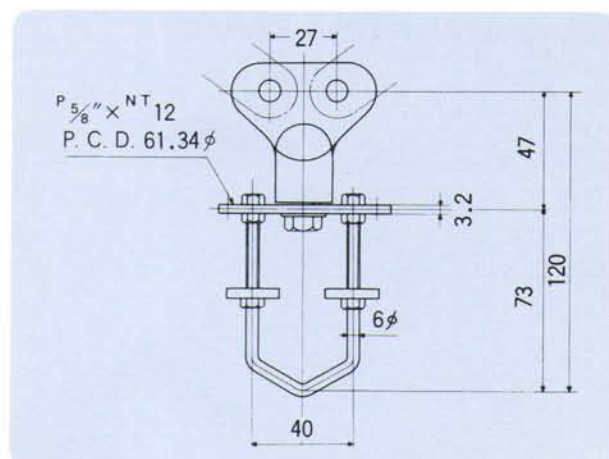
◆ Type I



◆ Type Y-I



◆ Type Y-II



◆ Rotator Type II



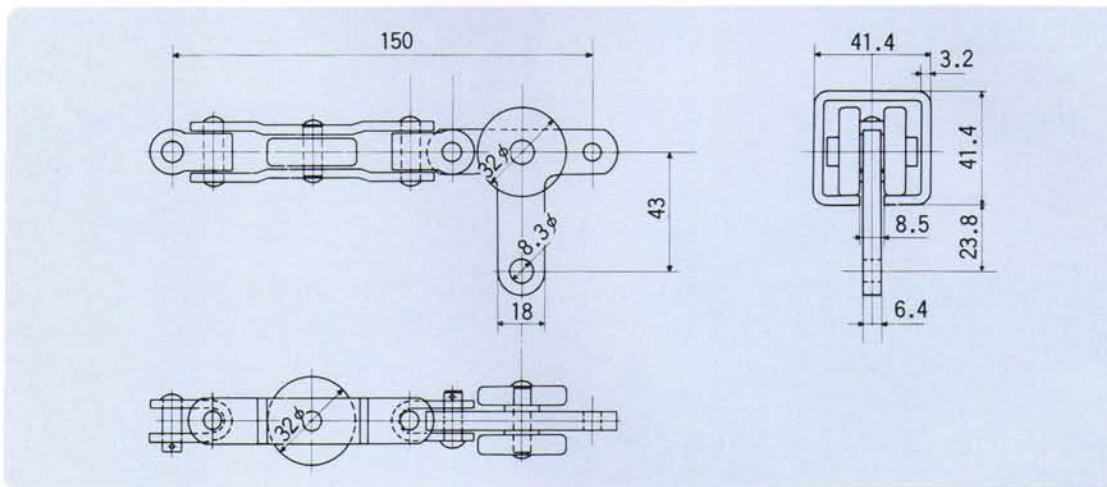
# HZR UNIVERSAL TROLLEY CHAIN

## CHAIN

HZR Universal Trolley Chain is a mini type of HZ-75 Chain and its rail turning radius is shortened to 300 mm and 600 mm.

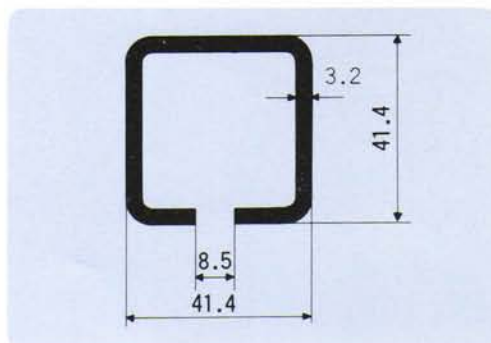
### CHAIN SPECIFICATIONS

Chain Pitch	150 mm
Allowable Chain Pull	150 kg
Chain Weight per meter	2.5 kg/m
Capacity per Trolley	20 kg



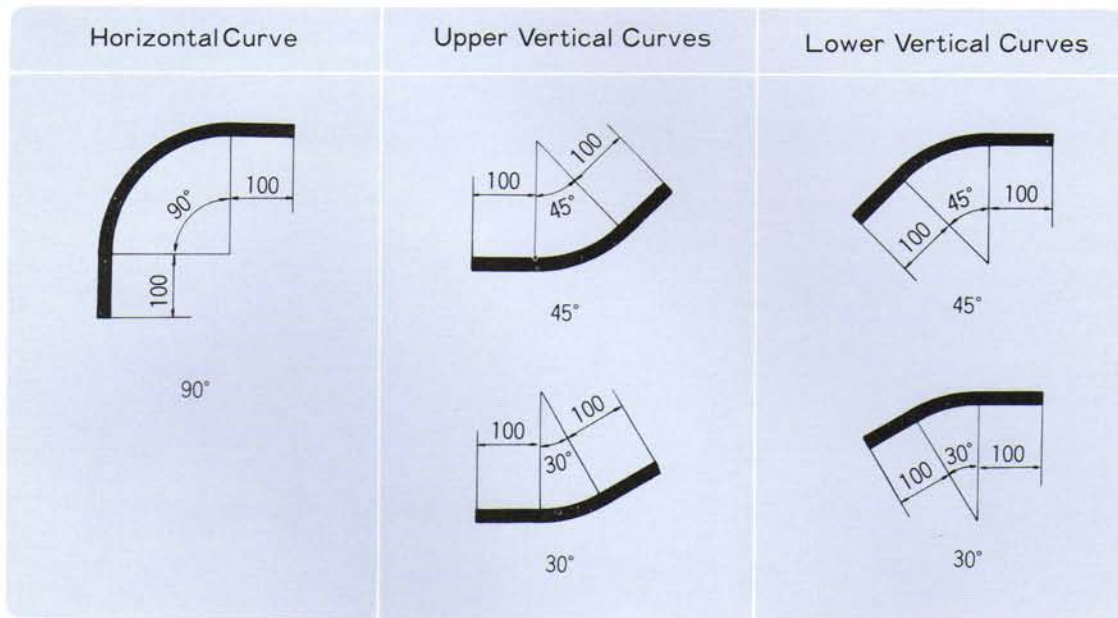
## STRAIGHT RAIL

The Rail is a square tubular section roll-formed of steel sheet and 5.0 meters long per piece as standard.



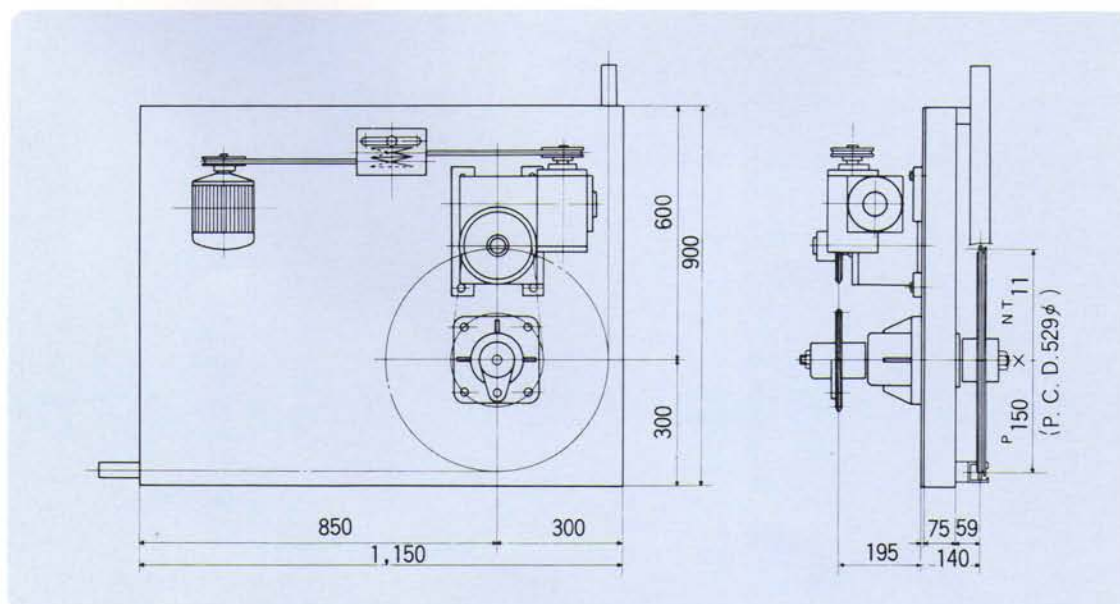
## CURVED RAIL

All Curves of HZR Trolley Chain are provided with radius 300 mm and 600 mm. Illustrated below are Horizontal Curve, Upper Vertical Curves and Lower Vertical Curves.



## DRIVE UNIT

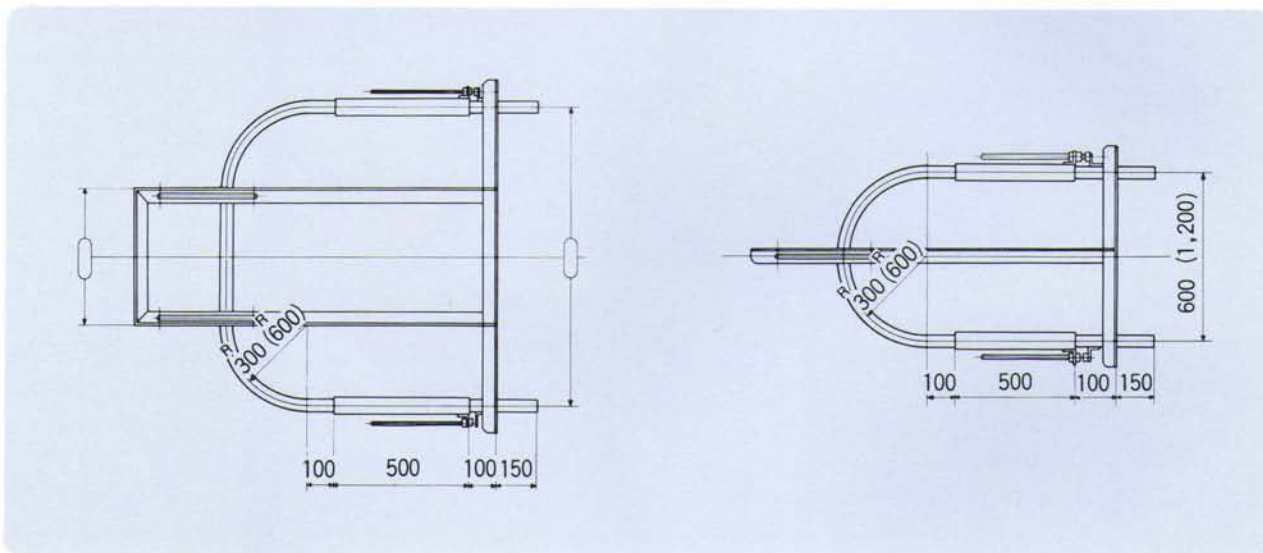
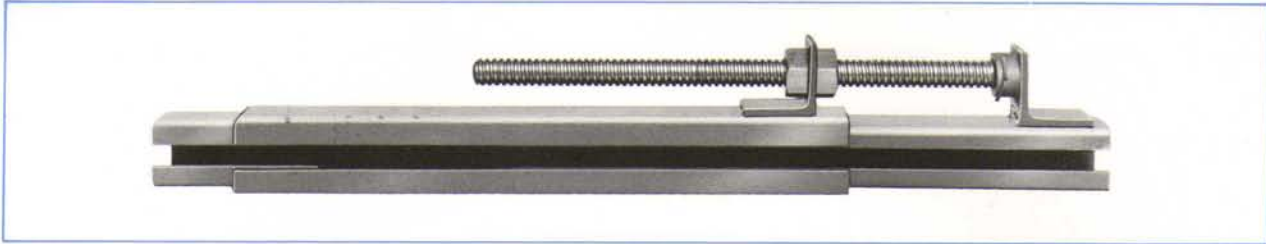
The Drive Unit is to be located at a corner or a turn and is driven by Sprocket Wheel. Sprocket Wheel, Vertical Metal Portion, Shaft and Shear Pin Unit are in stock as standard parts or components.



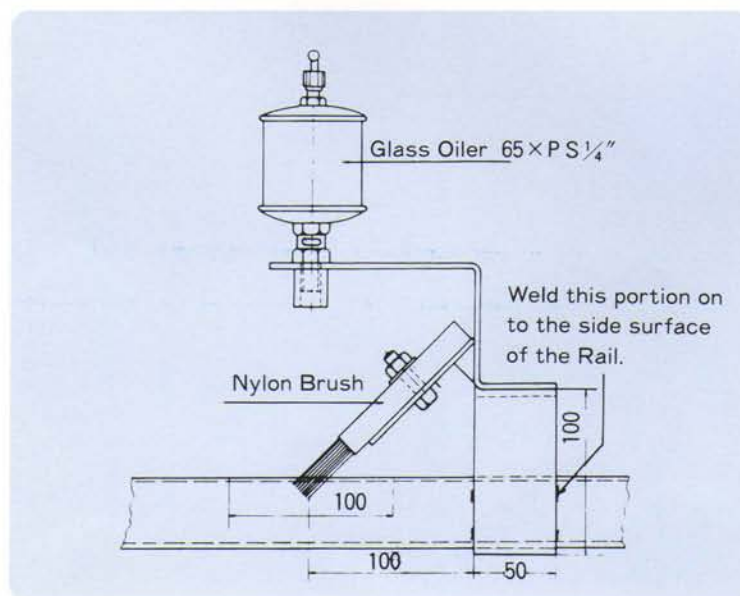


## TAKE-UP UNIT

The Screw type Take-up as illustrated below is in stock as standard.



## CHAIN LUBRICATOR



# HZ5200 UNIVERSAL TROLLY CHAIN

(PAT. No. I 406360)

The HZ5200 Chain is designed to run in the Rail whose slit or opening is put upward. By doing so, the Rail prevents dusts or oil from falling or dipping and can keep surroundings clean. Thus, the HZ5200 Chain Conveyor is very unique, and can be used where conventional conveyors cannot be applied.

## CHAIN SPECIFICATIONS

Chain Pitch	200 mm
Allowable Chain Pull	400 kg
Ultimate Strength	5,000 kg
Capacity per Trolley	30 kg
Load Space	200 mm
Chain Weight per meter	3.9 kg/m

Remarks : Parts or components of HZ75 Chain Conveyor can be applied to HZ5200 except its Drive Unit and Hanger.

