



VACUUM TUBE LIFTER

USES

- Rationalising of the working station
- Palletising and de-palletising of bags, cartons, drums, wooden panels, metal sheets, etc.

METHOD OF OPERATION

- The vacuum pump is connected to the lifting tube by an air hose. The vacuum occurs in the lifting tube as soon as the suction foot attaches to the load to be manipulated.
- The lifting tube contracts (like an accordion) and the load rises. The load can then be moved to the required area or suspended weightless. The up and down movement is made using the control handle.

SAFETY FEATURES

- Protection of the vacuum pump is by a replaceable air filter situated before the pump.
- In the event of power failure, a non-return valve enables the load to be gently lowered to the floor without slipping from the suction foot.
- In the case of excess load the device will not lift at all.

IDEALLY SUITED TO DIFFERENT SECTORS OF INDUSTRY :

- FOOD
- TIMBER
- CHEMICALS
- INDUSTRIALS, Etc.

ACCESSORIES



Vacuum pump



Filter



Carton twin suction foot*



Sack suction foot*



Rectangular suction foot*



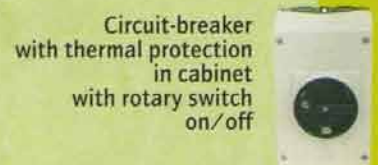
Drum suction foot*



Bellows cups suction foot*



Rectangular suction foot with bottom swivel



Circuit-breaker with thermal protection in cabinet with rotary switch on/off



Fixing plate



Acoustic enclosure for vacuum pump



Vacuum gauge

*Suction feet with quick change-over attachment

Food industry

Palletising, de-palletising and supplying of hoppers

OUR SECTORS OF ACTIVITY :

- Slaughter-houses
- Dairies
- Preserving
- Fish processing industry
- Grain processing companies
- Animal food
- Industrial bakeries and confectioneries
- Drinks industry

Palletising and de-palletising of sacks



Handling of round cheese



Handling of frozen meat

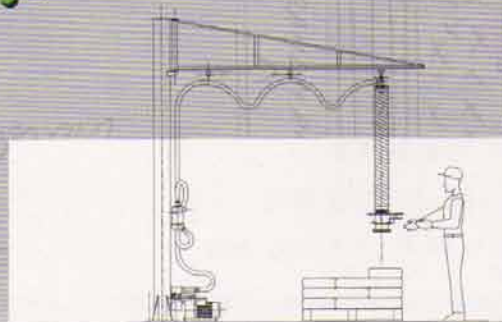


Handling of cases with extended articulated handle



Palletising of cartons with extended handle

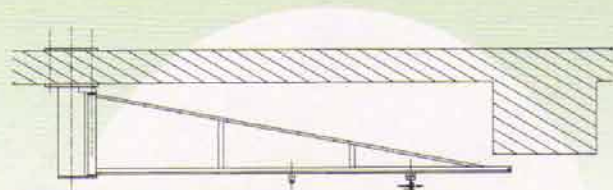
Manut-LM



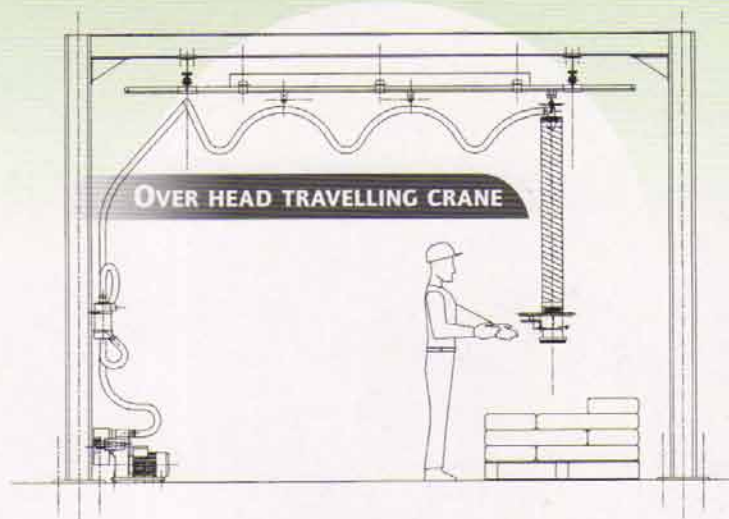
METHOD OF OPERATION

- The vacuum pump is connected to the lifting tube by an air hose. The vacuum occurs in the lifting tube as soon as the suction foot attaches to the load to be manipulated.
- The lifting tube contracts (like an accordion) and the load rises. The load can then be moved to the required area or suspended weightless. The up and down movement is made using the control handle.

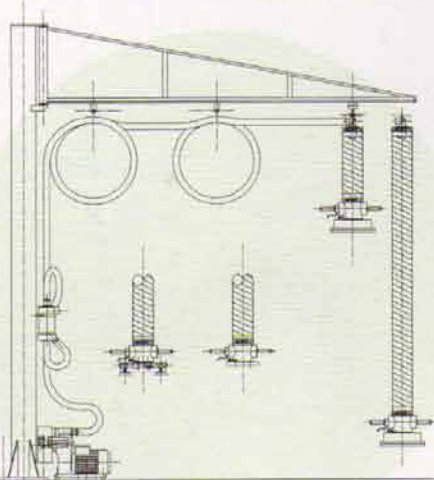
Different types of supports for the vacuum tube lifter



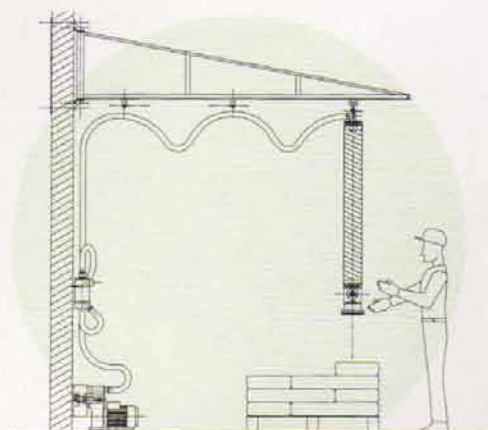
**CEILING MOUNTED COLUMN
WITH SWIVELLING JIB ARM**



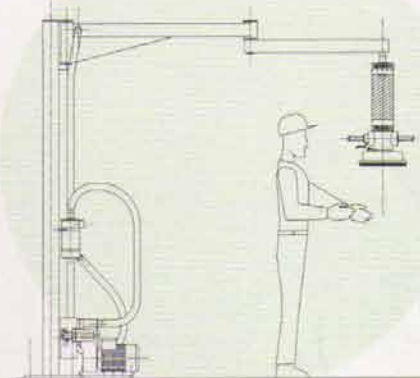
OVER HEAD TRAVELLING CRANE



**FLOOR MOUNTED COLUMN
WITH SWIVELLING JIB ARM**



**WALL MOUNTED
SWIVELLING JIB ARM**



KNUCKLE JOINTED JIB ARM

TECHNICAL

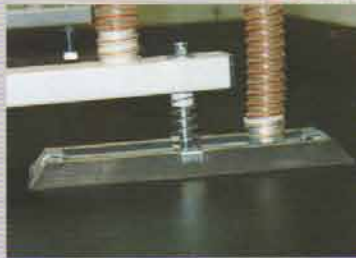
- Electric supply : **230/400 V, three phase, 50 Hz**
- Electrical protection: **IP55, IP65, ADF...**
- Finish: **Steel epoxy paint or stainless steel.**
- Electrical power: **3 kW - 4 kW**
- Lifting speed: **0 - 50 m/s**
- Standard colour: **RAL 6018**
- Lifting tube diameter: **80 to 300 mm**
- Standard stroke: **1500 to 1700 mm**

Discover our vacuum tube lifter for the handling of wooden panels, wooden boards, sawn timber, etc.

For transferring material to vertical or horizontal machines

➔ **OUR SECTORS OF ACTIVITY :**

- Timber yards
- Wood machine suppliers
- Furnishing
- Kitchen furnishing
- Manufacturers of furniture
- Manufacturers of panels
- Industrial joinery
- Roof truss manufacturer
- Sawmills



Handling of panels horizontal to horizontal



Barrel handling



Panel tilter

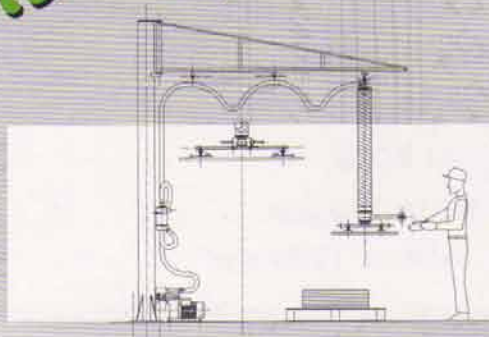


Handling of timber for supplying a machine



Handling of timber in sawmills

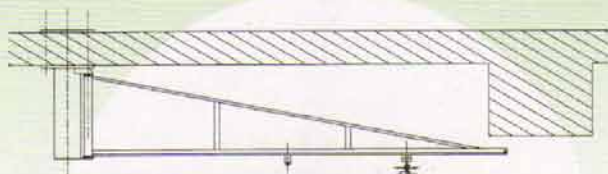
Manut-LM



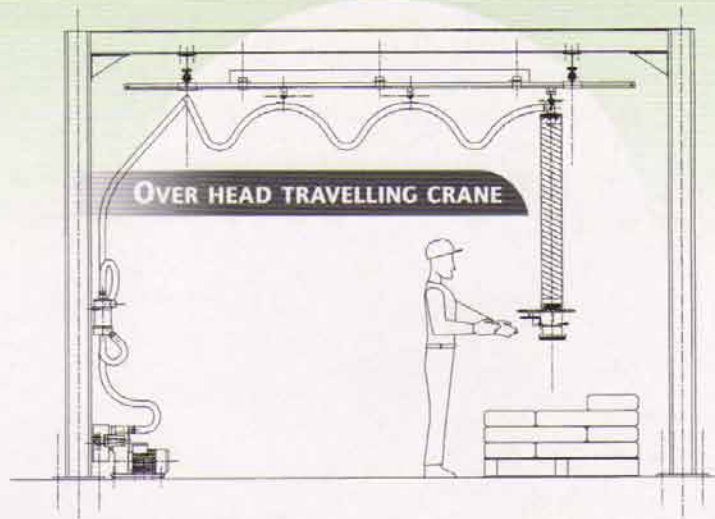
METHOD OF OPERATION

- The vacuum pump is connected to the lifting tube by an air hose. The vacuum occurs in the lifting tube as soon as the suction foot attaches to the load to be manipulated.
- The lifting tube contracts (like an accordion) and the load rises. The load can then be moved to the required area or suspended weightless. The up and down movement is made using the control handle.

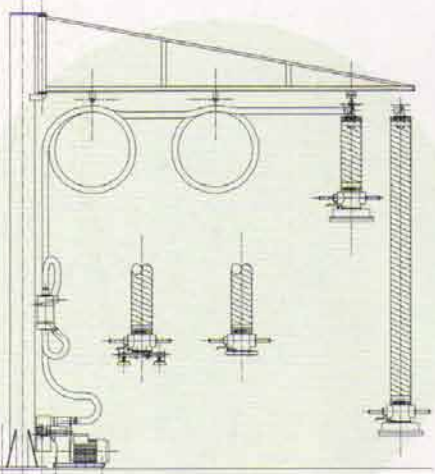
Different types of supports for the vacuum tube lifter



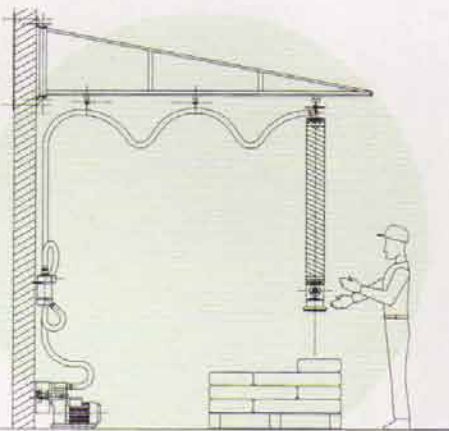
**CEILING MOUNTED COLUMN
WITH SWIVELLING JIB ARM**



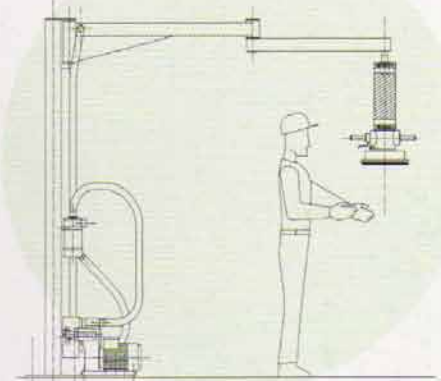
OVER HEAD TRAVELLING CRANE



**FLOOR MOUNTED COLUMN
WITH SWIVELLING JIB ARM**



**WALL MOUNTED
SWIVELLING JIB ARM**




KNUCKLE JOINTED JIB ARM

TECHNICAL

- Electric supply : **230/400 V, three phase, 50 Hz**
- Electrical protection: **IP55, IP65, ADF...**
- Finish: **Steel epoxy paint or stainless steel.**
- Electrical power: **3 kW - 4 kW**
- Lifting speed: **0 - 50 m/s**
- Standard colour: **RAL 6018**
- Lifting tube diameter: **80 to 300 mm**
- Standard stroke: **1500 to 1700 mm**

Supplying mixers, palletising and de-palletising of loads

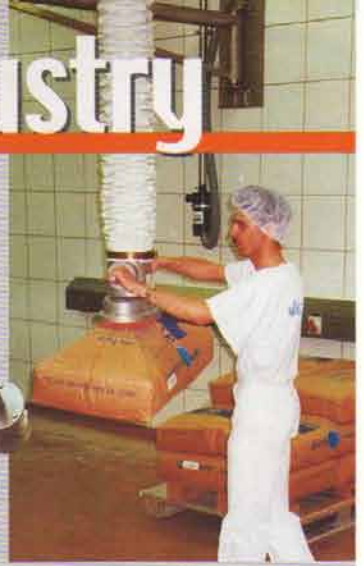

OUR SECTORS OF ACTIVITY :

- Transformation of chemical products
- Manufacturer of glue
- Manufacturer of paints and polishes
- Manufacturer of cosmetics
- Plastic and rubber industry
- Pharmaceuticals
- Petrochemicals
- Manufacturer of fertilisers

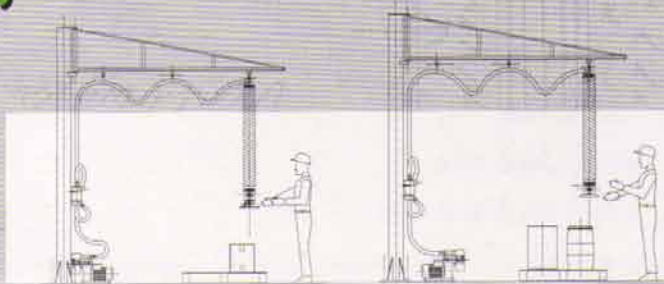
220 litre drum handling



Drum tilter

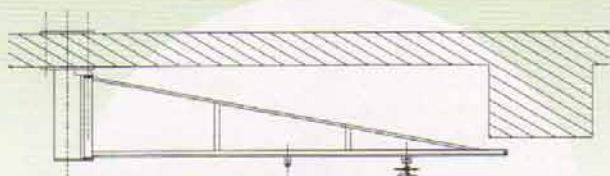
Vacuum lifter
in stainless steel
for sack handling
in controlled enPalletising
of cartons

Manut-LM

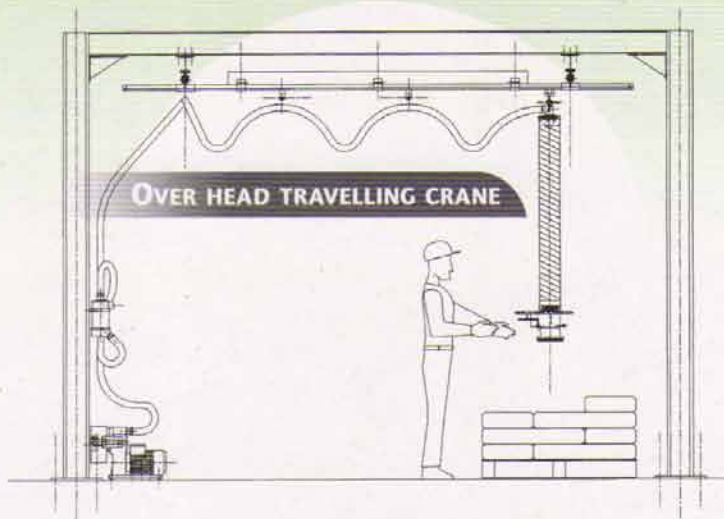
**METHOD OF OPERATION**

- The vacuum pump is connected to the lifting tube by an air hose. The vacuum occurs in the lifting tube as soon as the suction foot attaches to the load to be manipulated.
- The lifting tube contracts (like an accordion) and the load rises. The load can then be moved to the required area or suspended weightless. The up and down movement is made using the control handle.

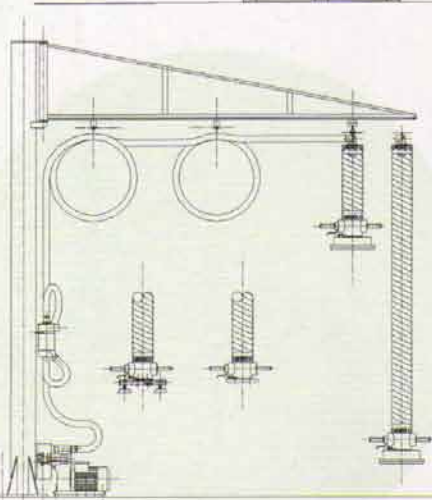
Different types of supports for the vacuum tube lifter



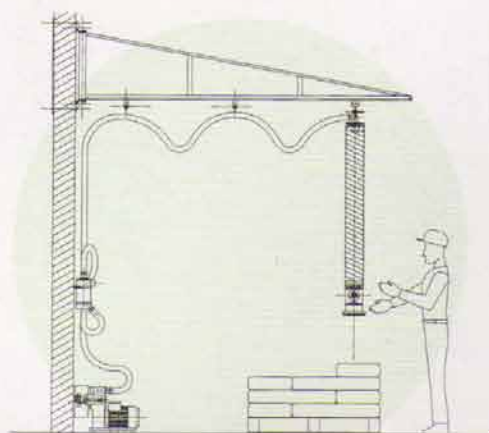
**CEILING MOUNTED COLUMN
WITH SWIVELLING JIB ARM**



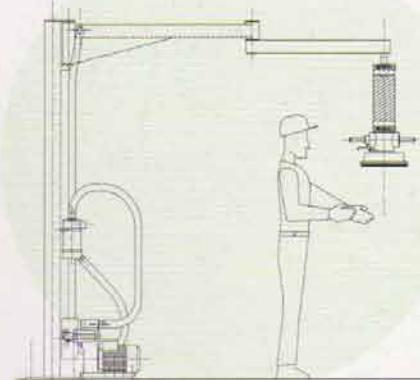
OVER HEAD TRAVELLING CRANE



**FLOOR MOUNTED COLUMN
WITH SWIVELLING JIB ARM**



**WALL MOUNTED
SWIVELLING JIB ARM**



KNUCKLE JOINTED JIB ARM

TECHNICAL

- Electric supply : **230/400 V, three phase, 50 Hz**
- Electrical protection: **IP55, IP65, ADF...**
- Finish: **Steel epoxy paint or stainless steel.**
- Electrical power: **3 kW - 4 kW**
- Lifting speed: **0 - 50 m/s**
- Standard colour: **RAL 6018**
- Lifting tube diameter: **80 to 300 mm**
- Standard stroke: **1500 to 1700 mm**

Special applications

The vacuum tube lifter can be used whatever the load to be handled. Some typical applications :



Handling of cloth rolls with plastic film covering



Handling of computer equipment



Handling of a chair with pneumatic grippers



Handling of paving & kerb stones



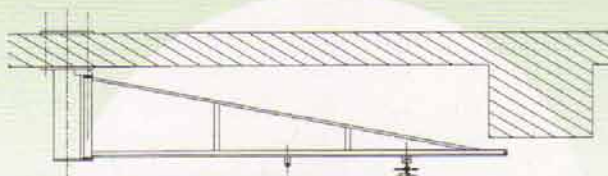
Handling of small loads at the work station

Manut-LM

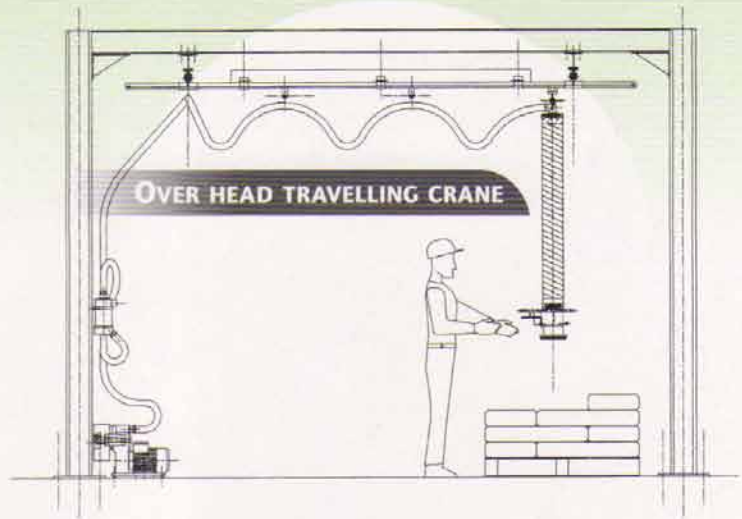
METHOD OF OPERATION

- The vacuum pump is connected to the lifting tube by an air hose. The vacuum occurs in the lifting tube as soon as the suction foot attaches to the load to be manipulated.
- The lifting tube contracts (like an accordion) and the load rises. The load can then be moved to the required area or suspended weightless. The up and down movement is made using the control handle.

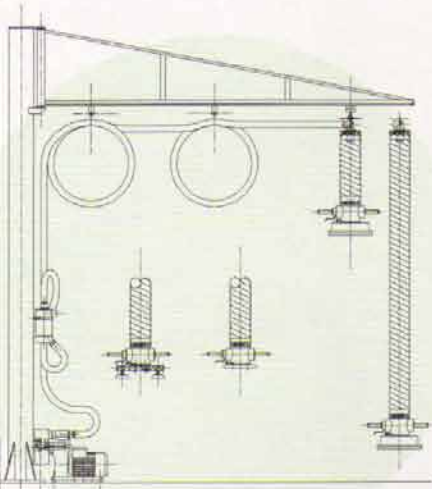
Different types of supports for the vacuum tube lifter



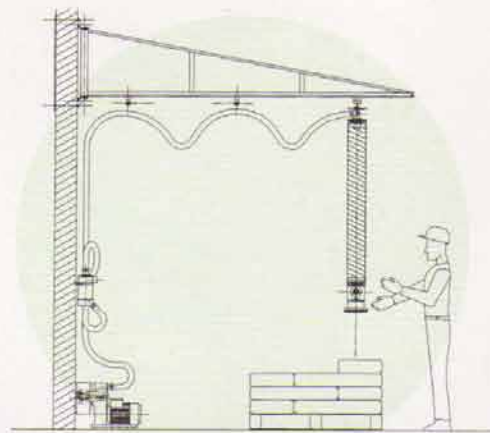
**CEILING MOUNTED COLUMN
WITH SWIVELLING JIB ARM**



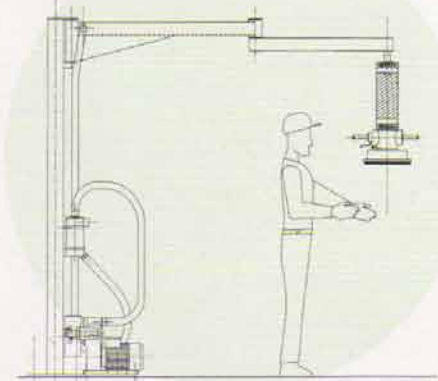
OVER HEAD TRAVELLING CRANE



**FLOOR MOUNTED COLUMN
WITH SWIVELLING JIB ARM**



**WALL MOUNTED
SWIVELLING JIB ARM**



KNUCKLE JOINTED JIB ARM

TECHNICAL

- Electric supply : **230/400 V, three phase, 50 Hz**
- Electrical protection: **IP55, IP65, ADF...**
- Finish: **Steel epoxy paint or stainless steel.**
- Electrical power: **3 kW - 4 kW**
- Lifting speed: **0 - 50 m/s**
- Standard colour: **RAL 6018**
- Lifting tube diameter: **80 to 300 mm**
- Standard stroke: **1500 to 1700 mm**