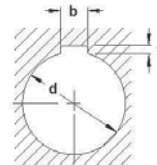


## TAPER BUSH

Taper Bushes are used to fit Pulleys, Chain Sprocket and Coupling etc. Their easy assembly has proved a cost effective and convenient method of mating to the shaft without the need for machining. When dismantling, the grub screws are removed and one is used in the jacking off hole provided.



## OMEGA

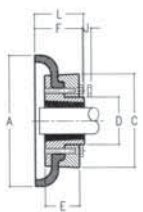
### Dimensions – Taper Bushes

| d    | 9   | 10  | 11  | 12  | 14  | 15  | 16  | 18  | 19  | 20  | 22  | 24  | 25  | 28  | 30  | 32  | 35  | 38  | 40  | 42  | 45  | 48  | 50  | 55  | 60  | 65  | 70  | 75  | 80  | 85  | 90  | 95  | 100 | 105 | 110 | 115 |   |   |
|------|-----|-----|-----|-----|-----|-----|-----|-----|-----|-----|-----|-----|-----|-----|-----|-----|-----|-----|-----|-----|-----|-----|-----|-----|-----|-----|-----|-----|-----|-----|-----|-----|-----|-----|-----|-----|---|---|
| b    | 3   | 3   | 4   | 4   | 5   | 5   | 6   | 6   | 6   | 8   | 8   | 8   | 8   | 10  | 10  | 10  | 12  | 12  | 14  | 14  | 14  | 16  | 16  | 18  | 18  | 20  | 20  | 22  | 22  | 25  | 25  | 28  | 28  | 28  | 32  |     |   |   |
| t    | 1.4 | 1.4 | 1.8 | 1.8 | 2.3 | 2.3 | 2.8 | 2.8 | 2.8 | 3.3 | 3.3 | 3.3 | 3.3 | 3.3 | 3.3 | 3.3 | 3.3 | 3.8 | 3.8 | 3.8 | 4.4 | 4.4 | 4.4 | 4.4 | 4.4 | 4.9 | 4.9 | 5.4 | 5.4 | 5.4 | 6.4 | 6.4 | 6.4 | 6.4 | 7.4 |     |   |   |
| 1008 | *   | *   | *   | *   | *   | *   | *   | *   | *   | *   | *   | *   | *   | *   | *   | *   | *   | *   | *   | *   | *   | *   | *   | *   | *   | *   | *   | *   | *   | *   | *   | *   | *   | *   | *   | *   | * | * |
| 1108 | *   | *   | *   | *   | *   | *   | *   | *   | *   | *   | *   | *   | *   | *   | *   | *   | *   | *   | *   | *   | *   | *   | *   | *   | *   | *   | *   | *   | *   | *   | *   | *   | *   | *   | *   | *   | * | * |
| 1210 | *   | *   | *   | *   | *   | *   | *   | *   | *   | *   | *   | *   | *   | *   | *   | *   | *   | *   | *   | *   | *   | *   | *   | *   | *   | *   | *   | *   | *   | *   | *   | *   | *   | *   | *   | *   | * | * |
| 1310 | *   | *   | *   | *   | *   | *   | *   | *   | *   | *   | *   | *   | *   | *   | *   | *   | *   | *   | *   | *   | *   | *   | *   | *   | *   | *   | *   | *   | *   | *   | *   | *   | *   | *   | *   | *   | * | * |
| 1610 | *   | *   | *   | *   | *   | *   | *   | *   | *   | *   | *   | *   | *   | *   | *   | *   | *   | *   | *   | *   | *   | *   | *   | *   | *   | *   | *   | *   | *   | *   | *   | *   | *   | *   | *   | *   | * | * |
| 2012 | *   | *   | *   | *   | *   | *   | *   | *   | *   | *   | *   | *   | *   | *   | *   | *   | *   | *   | *   | *   | *   | *   | *   | *   | *   | *   | *   | *   | *   | *   | *   | *   | *   | *   | *   | *   | * | * |
| 2517 | *   | *   | *   | *   | *   | *   | *   | *   | *   | *   | *   | *   | *   | *   | *   | *   | *   | *   | *   | *   | *   | *   | *   | *   | *   | *   | *   | *   | *   | *   | *   | *   | *   | *   | *   | *   | * | * |
| 3020 | *   | *   | *   | *   | *   | *   | *   | *   | *   | *   | *   | *   | *   | *   | *   | *   | *   | *   | *   | *   | *   | *   | *   | *   | *   | *   | *   | *   | *   | *   | *   | *   | *   | *   | *   | *   | * | * |
| 3525 | *   | *   | *   | *   | *   | *   | *   | *   | *   | *   | *   | *   | *   | *   | *   | *   | *   | *   | *   | *   | *   | *   | *   | *   | *   | *   | *   | *   | *   | *   | *   | *   | *   | *   | *   | *   | * | * |
| 4030 | *   | *   | *   | *   | *   | *   | *   | *   | *   | *   | *   | *   | *   | *   | *   | *   | *   | *   | *   | *   | *   | *   | *   | *   | *   | *   | *   | *   | *   | *   | *   | *   | *   | *   | *   | *   | * | * |
| 4535 | *   | *   | *   | *   | *   | *   | *   | *   | *   | *   | *   | *   | *   | *   | *   | *   | *   | *   | *   | *   | *   | *   | *   | *   | *   | *   | *   | *   | *   | *   | *   | *   | *   | *   | *   | *   | * | * |
| 4545 | *   | *   | *   | *   | *   | *   | *   | *   | *   | *   | *   | *   | *   | *   | *   | *   | *   | *   | *   | *   | *   | *   | *   | *   | *   | *   | *   | *   | *   | *   | *   | *   | *   | *   | *   | *   | * | * |
| 5050 | *   | *   | *   | *   | *   | *   | *   | *   | *   | *   | *   | *   | *   | *   | *   | *   | *   | *   | *   | *   | *   | *   | *   | *   | *   | *   | *   | *   | *   | *   | *   | *   | *   | *   | *   | *   | * | * |

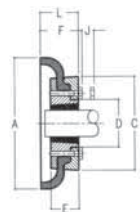
## TAPER BUSH TYRE COUPLING



F FLANGE



H FLANGE



| Model Number | Bush No. | Max Bore | A     | C     | D     | F    | L  | E  | J  | Weight in kgs | Type |
|--------------|----------|----------|-------|-------|-------|------|----|----|----|---------------|------|
| A40F         | 1008     | 25.0     | 104.0 | 82.0  | -     | -    | 33 | 22 | 29 | 0.8           | 0.14 |
| A40H         | 1008     | 25.0     | 104.0 | 82.0  | -     | -    | 33 | 22 | 29 | 0.8           |      |
| A50F         | 1210     | 32.0     | 133.0 | 100.0 | 79.0  | -    | 38 | 25 | 38 | 1.1           | 0.22 |
| A50H         | 1210     | 32.0     | 133.0 | 100.0 | 79.0  | -    | 38 | 25 | 38 | 1.1           |      |
| A60F         | 1610     | 40.0     | 165.0 | 125.0 | 103.0 | -    | 42 | 25 | 38 | 1.9           | 0.41 |
| A60H         | 1610     | 40.0     | 165.0 | 125.0 | 103.0 | -    | 42 | 25 | 38 | 1.9           |      |
| A70F         | 2012     | 50.0     | 187.0 | 144.0 | 80.0  | 50.0 | 44 | 32 | 42 | 2.4           | 0.45 |
| A70H         | 1610     | 40.0     | 187.0 | 144.0 | 80.0  | 50.0 | 42 | 25 | 38 | 2.7           |      |
| A80F         | 2517     | 55.0     | 211.0 | 167.0 | 95.0  | 54.0 | 58 | 45 | 48 | 3.6           | 0.75 |
| A80H         | 2012     | 50.0     | 211.0 | 167.0 | 97.0  | 54.0 | 45 | 32 | 42 | 4             |      |
| A90F         | 2517     | 55.0     | 235.0 | 188.0 | 108.0 | 60.0 | 60 | 45 | 48 | 5.5           | 1.00 |
| A90H         | 2517     | 55.0     | 235.0 | 188.0 | 108.0 | 60.0 | 60 | 45 | 48 | 5.2           |      |
| A100F        | 3020     | 75.0     | 254.0 | 216.0 | 120.0 | 62.0 | 66 | 51 | 55 | 8.1           | 0.98 |
| A100H        | 2517     | 55.0     | 254.0 | 216.0 | 113.0 | 62.0 | 60 | 45 | 48 | 8.1           |      |
| A110F        | 3020     | 75.0     | 279.0 | 233.0 | 134.0 | 62.0 | 64 | 51 | 55 | 9.2           | 1.36 |
| A110H        | 3020     | 75.0     | 279.0 | 233.0 | 134.0 | 62.0 | 64 | 51 | 55 | 9.2           |      |
| A120F        | 3625     | 75.0     | 314.0 | 264.0 | 140.0 | 67.0 | 60 | 65 | 67 | 12.2          | 1.81 |
| A120H        | 3020     | 75.0     | 314.0 | 264.0 | 140.0 | 67.0 | 66 | 51 | 65 | 13.3          |      |
| A140F        | 3535     | 85.0     | 359.0 | 311.0 | 178.0 | 73.0 | 82 | 65 | 67 | 27.05         | 2.20 |
| A140H        | 3535     | 85.0     | 359.0 | 311.0 | 178.0 | 73.0 | 82 | 65 | 67 | 27.05         |      |

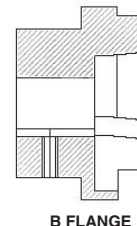
## TAPER BUSH HRC COUPLING



H FLANGE



F FLANGE



B FLANGE

| Coupling Number | Overall Diameter | Hub Diameter | Element       |            | Bush No. | Bush Max. Bore mm | Weight (kg) | B Flange Max. Bore mm | Assembled Length |        |       |
|-----------------|------------------|--------------|---------------|------------|----------|-------------------|-------------|-----------------------|------------------|--------|-------|
|                 |                  |              | Ring Diameter | Ring Width |          |                   |             |                       | FF, FH, HH       | FB, HB | BB    |
| 70              | 69               | 60           | 31            | 18.5       | 1008     | 25                | 1.00        | 32                    | 65.5             | 65.5   | 65.5  |
| 90              | 85               | 70           | 42            | 22.5       | 1108     | 28                | 1.17        | 42                    | 69.5             | 76.5   | 82.5  |
| 110             | 112              | 100          | 45            | 29.5       | 1610     | 42                | 5.00        | 55                    | 82.5             | 100.5  | 119.5 |
| 130             | 130              | 105          | 50            | 36.5       | 1610     | 42                | 5.64        | 60                    | 89.5             | 110.5  | 131.5 |
| 150             | 150              | 115          | 62            | 40.5       | 2012     | 50                | 7.11        | 70                    | 107.5            | 129.5  | 152.5 |
| 180             | 180              | 125          | 77            | 49.5       | 2517     | 60                | 16.60       | 80                    | 142.5            | 165.5  | 189.5 |
| 230             | 225              | 155          | 99            | 59.5       | 3020     | 75                | 26.00       | 100                   | 164.5            | 202.5  | 239.5 |
| 280             | 275              | 206          | 119           | 74.5       | 3525     | 100               | 50.00       | 115                   | 207.5            | 246.5  | 285.5 |

## TAPER BUSH SPROCKET

TB35 - for ANSI 35-1 Roller Chain (T=4.3)

| Model Number | Outer Dia. | Pitch Dia. | Bush Number | Max Bore | Hub Dia. |
|--------------|------------|------------|-------------|----------|----------|
| TB35B18T     | 60         | 54.85      | 1008        | 25       | 44       |
| TB35B19T     | 63         | 57.87      | 1008        | 25       | 46       |
| TB35B20T     | 66         | 60.89      | 1008        | 25       | 46       |
| TB35B21T     | 69         | 63.91      | 1008        | 25       | 46       |
| TB35B22T     | 72         | 66.93      | 1008        | 25       | 55       |
| TB35B23T     | 75         | 69.95      | 1008        | 25       | 55       |
| TB35B24T     | 78         | 72.97      | 1210        | 32       | 63       |
| TB35B25T     | 81         | 76.00      | 1210        | 32       | 63       |
| TB35B26T     | 84         | 79.02      | 1210        | 32       | 63       |
| TB35B27T     | 87         | 82.05      | 1610        | 42       | 71       |
| TB35B28T     | 90         | 85.07      | 1610        | 42       | 71       |
| TB35B29T     | 93         | 88.10      | 1610        | 42       | 71       |
| TB35B30T     | 96         | 91.12      | 1610        | 42       | 71       |

TB40 - for ANSI 40-1 Roller Chain (T=7.2)

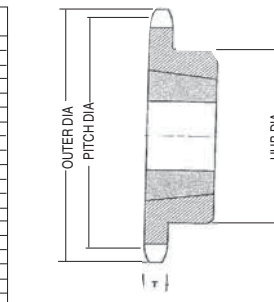
| Model Number | Outer Dia. | Pitch Dia. | Bush Number | Max Bore | Hub Dia. |
|--------------|------------|------------|-------------|----------|----------|
| TB40B14T     | 63         | 57.07      | 1008        | 25       | 44       |
| TB40B15T     | 67         | 61.08      | 1008        | 25       | 46       |
| TB40B16T     | 71         | 65.10      | 1008        | 25       | 49       |
| TB40B17T     | 76         | 69.12      | 1008        | 25       | 49       |
| TB40B18T     | 80         | 73.14      | 1210        | 32       | 59       |
| TB40B19T     | 84         | 77.16      | 1210        | 32       | 63       |
| TB40B20T     | 88         | 81.18      | 1210        | 32       | 63       |
| TB40B21T     | 92         | 85.21      | 1610        | 42       | 71       |
| TB40B22T     | 96         | 89.24      | 1610        | 42       | 71       |
| TB40B23T     | 100        | 93.27      | 1610        | 42       | 76       |
| TB40B24T     | 104        | 97.30      | 1610        | 42       | 83       |
| TB40B25T     | 108        | 101.33     | 1610        | 42       | 83       |
| TB40B26T     | 112        | 105.36     | 1610        | 42       | 83       |
| TB40B27T     | 116        | 109.40     | 1610        | 42       | 76       |
| TB40B28T     | 120        | 113.45     | 1610        | 42       | 76       |
| TB40B29T     | 124        | 117.46     | 1610        | 42       | 76       |
| TB40B30T     | 128        | 121.50     | 1610        | 42       | 76       |

TB50 - for ANSI 50-1 Roller Chain (T=8.7)

| Model Number | Outer Dia. | Pitch Dia. | Bush Number | Max Bore | Hub Dia. |
|--------------|------------|------------|-------------|----------|----------|
| TB50B12T     | 69         | 61.34      | 1008        | 25       | 44       |
| TB50B13T     | 74         | 66.34      | 1008        | 25       | 46       |
| TB50B14T     | 79         | 71.34      | 1008        | 25       | 49       |
| TB50B15T     | 84         | 76.35      | 1210        | 32       | 59       |
| TB50B16T     | 89         | 81.37      | 1210        | 32       | 63       |
| TB50B17T     | 94         | 86.39      | 1210        | 32       | 63       |
| TB50B18T     | 100        | 91.42      | 1610        | 42       | 71       |
| TB50B19T     | 105        | 96.45      | 1610        | 42       | 76       |
| TB50B20T     | 110        | 101.48     | 1610        | 42       | 76       |
| TB50B21T     | 115        | 106.51     | 1610        | 42       | 76       |
| TB50B22T     | 120        | 111.55     | 1610        | 42       | 76       |
| TB50B23T     | 125        | 116.58     | 2012        | 50       | 90       |
| TB50B24T     | 130        | 121.62     | 2012        | 50       | 90       |
| TB50B25T     | 135        | 126.66     | 2012        | 50       | 90       |
| TB50B26T     | 140        | 131.70     | 2012        | 50       | 90       |
| TB50B27T     | 145        | 136.74     | 2012        | 50       | 90       |
| TB50B28T     | 150        | 141.79     | 2012        | 50       | 90       |
| TB50B29T     | 155        | 146.83     | 2012        | 50       | 90       |
| TB50B30T     | 161        | 151.87     | 2012        | 50       | 90       |

TB60 - for ANSI 60-1 Roller Chain (T=11.7)

| Model Number | Outer Dia. | Pitch Dia. | Bush Number | Max Bore | Hub Dia. |
|--------------|------------|------------|-------------|----------|----------|
| TB60B11T     | 76         | 67.62      | 1008        | 25       | 46       |
| TB60B12T     | 83         | 73.60      | 1008        | 25       | 49       |
| TB60B13T     | 89         | 79.60      | 1210        | 32       | 59       |
| TB60B14T     | 95         | 85.61      | 1210        | 32       | 63       |
| TB60B15T     | 101        | 91.62      | 1610        | 42       | 71       |
| TB60B16T     | 107        | 97.65      | 1610        | 42       | 76       |
| TB60B17T     | 113        | 103.67     | 1610        | 42       | 83       |
| TB60B18T     | 119        | 109.71     | 1610        | 42       | 83       |
| TB60B19T     | 126        | 115.74     | 1610        | 42       | 83       |
| TB60B20T     | 132        | 121.78     | 2012        | 50       | 90       |
| TB60B21T     | 138        | 127.82     | 2012        | 50       | 90       |
| TB60B22T     | 144        | 133.86     | 2012        | 50       | 90       |
| TB60B23T     | 150        | 139.90     | 2012        | 50       | 90       |
| TB60B24T     | 156        | 145.95     | 2012        | 50       | 90       |
| TB60B25T     | 162        | 151.99     | 2012        | 50       | 90       |
| TB60B26T     | 168        | 158.04     | 2517        | 60       | 108      |
| TB60B27T     | 174        | 164.09     | 2517        | 60       | 108      |
| TB60B28T     | 180        | 170.14     | 2517        | 60       | 108      |
| TB60B29T     | 187        | 176.20     | 2517        | 60       | 108      |
| TB60B30T     | 193        | 182.25     | 2517        | 60       | 108      |

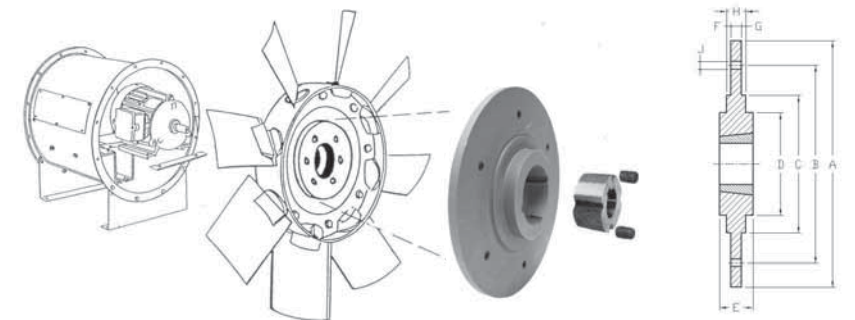


Sprocket Material : S45 Carbon Steel  
- Hardened Teeth

All dimensions in mm

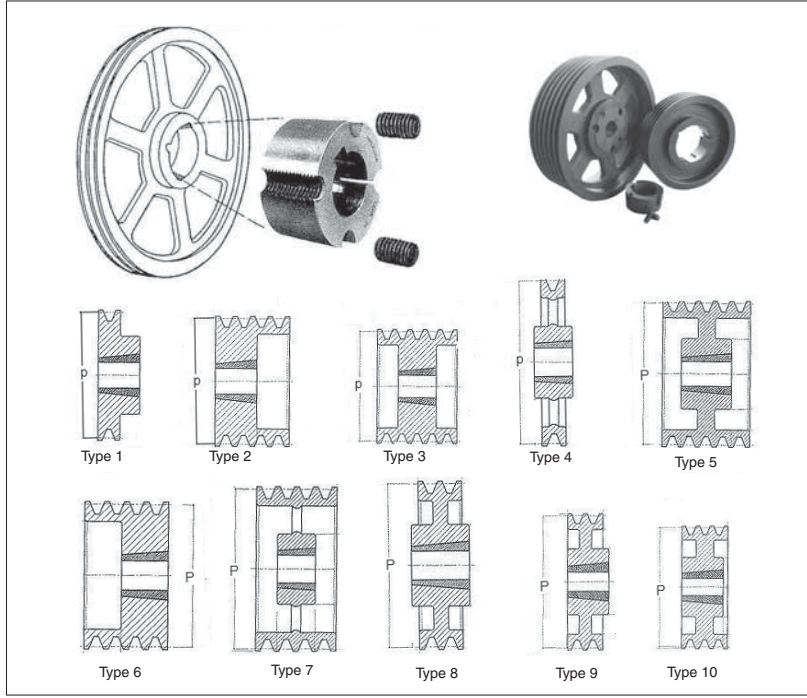
## TAPER BUSH WELD / BOLT-ON HUB

## OMEGA



**TB TYPE PULLEYS**

**OMEGA**



**TB Pulleys - for SPZ & Z Belts**

| Pitch Dia (P) | NO. of Grooves | BUSH NO. | Max. Bore | Pulley Type | Pitch Dia (P) | NO. of Grooves | BUSH NO. | Max. Bore | Pulley Type | Pitch Dia (P) | NO. of Grooves | BUSH NO. | Max. Bore | Pulley Type | Pitch Dia (P) | NO. of Grooves | BUSH NO. | Max. Bore | Pulley Type |
|---------------|----------------|----------|-----------|-------------|---------------|----------------|----------|-----------|-------------|---------------|----------------|----------|-----------|-------------|---------------|----------------|----------|-----------|-------------|
| 56            | 1              | 1008     | 25        | 1           | 95            | 1              | 1210     | 32        | 1           | 125           | 5              | 2012     | 50        | 6           | 180           | 1              | 1610     | 42        | 8           |
| 56            | 2              | 1108     | 28        | 1           | 95            | 2              | 1610     | 42        | 6           | 180           | 2              | 2012     | 50        | 8           | 180           | 2              | 2012     | 50        | 8           |
| 60            | 1              | 1008     | 25        | 1           | 95            | 3              | 1610     | 42        | 6           | 180           | 3              | 2012     | 50        | 7           | 180           | 3              | 2012     | 50        | 7           |
| 60            | 2              | 1108     | 28        | 1           | 95            | 4              | 1610     | 42        | 6           | 180           | 4              | 2012     | 50        | 8           | 180           | 4              | 2012     | 50        | 8           |
| 63            | 1              | 1108     | 28        | 1           | 95            | 5              | 1610     | 42        | 6           | 180           | 5              | 2012     | 50        | 8           | 180           | 5              | 2012     | 50        | 8           |
| 63            | 2              | 1108     | 28        | 6           | 100           | 1              | 1210     | 32        | 1           | 132           | 4              | 2012     | 50        | 6           | 190           | 2              | 1610     | 42        | 8           |
| 67            | 1              | 1108     | 28        | 1           | 100           | 2              | 1610     | 42        | 6           | 132           | 5              | 2012     | 50        | 6           | 190           | 2              | 2012     | 50        | 8           |
| 67            | 2              | 1108     | 28        | 6           | 100           | 3              | 1610     | 42        | 6           | 140           | 2              | 1610     | 42        | 6           | 190           | 3              | 2012     | 50        | 8           |
| 67            | 3              | 1108     | 28        | 6           | 100           | 4              | 1610     | 42        | 6           | 140           | 3              | 2012     | 50        | 2           | 190           | 4              | 2012     | 50        | 8           |
| 71            | 1              | 1108     | 28        | 1           | 106           | 1              | 1610     | 42        | 1           | 140           | 4              | 2012     | 50        | 2           | 200           | 1              | 2012     | 50        | 4           |
| 71            | 2              | 1108     | 28        | 6           | 106           | 2              | 1610     | 42        | 6           | 140           | 5              | 2012     | 50        | 2           | 200           | 2              | 2012     | 50        | 4           |
| 71            | 3              | 1108     | 28        | 6           | 106           | 3              | 1610     | 42        | 6           | 140           | 6              | 2012     | 50        | 2           | 200           | 3              | 2012     | 50        | 4           |
| 75            | 1              | 1108     | 28        | 1           | 106           | 4              | 1610     | 42        | 6           | 150           | 1              | 1610     | 42        | 1           | 200           | 4              | 2012     | 50        | 5           |
| 75            | 2              | 1210     | 32        | 6           | 106           | 5              | 1610     | 42        | 6           | 150           | 2              | 2012     | 50        | 2           | 200           | 5              | 2012     | 50        | 5           |
| 75            | 3              | 1210     | 32        | 6           | 106           | 6              | 2012     | 50        | 6           | 150           | 3              | 2012     | 50        | 2           | 200           | 6              | 2012     | 50        | 5           |
| 80            | 1              | 1210     | 32        | 1           | 112           | 1              | 1610     | 42        | 1           | 150           | 4              | 2012     | 50        | 2           | 224           | 1              | 2012     | 50        | 9           |
| 80            | 2              | 1210     | 32        | 6           | 112           | 2              | 1610     | 42        | 6           | 150           | 5              | 2012     | 50        | 2           | 224           | 2              | 2012     | 50        | 9           |
| 80            | 3              | 1210     | 32        | 6           | 112           | 3              | 2012     | 50        | 6           | 150           | 6              | 2012     | 50        | 2           | 224           | 3              | 2012     | 50        | 7           |
| 80            | 4              | 1210     | 32        | 6           | 112           | 4              | 2012     | 50        | 6           | 160           | 1              | 1610     | 42        | 1           | 250           | 1              | 2012     | 50        | 8           |
| 85            | 1              | 1210     | 32        | 1           | 118           | 1              | 1610     | 42        | 1           | 160           | 2              | 2012     | 50        | 2           | 250           | 2              | 2012     | 50        | 8           |
| 85            | 2              | 1610     | 42        | 6           | 118           | 2              | 1610     | 42        | 6           | 160           | 3              | 2012     | 50        | 2           | 250           | 3              | 2012     | 50        | 7           |
| 85            | 3              | 1610     | 42        | 6           | 118           | 3              | 1610     | 42        | 6           | 160           | 4              | 2012     | 50        | 2           | 280           | 1              | 2012     | 50        | 8           |
| 85            | 4              | 1610     | 42        | 6           | 118           | 4              | 2012     | 50        | 6           | 160           | 5              | 2012     | 50        | 2           | 280           | 2              | 2012     | 50        | 8           |
| 85            | 5              | 1610     | 42        | 6           | 118           | 5              | 2012     | 50        | 6           | 160           | 6              | 2012     | 50        | 2           | 280           | 3              | 2012     | 50        | 8           |
| 90            | 1              | 1210     | 32        | 1           | 118           | 6              | 2012     | 50        | 6           | 170           | 1              | 1610     | 42        | 9           | 315           | 1              | 2012     | 50        | 8           |
| 90            | 2              | 1610     | 42        | 6           | 118           | 7              | 1610     | 42        | 6           | 170           | 2              | 2012     | 50        | 9           | 315           | 2              | 2012     | 50        | 8           |
| 90            | 3              | 1610     | 42        | 6           | 118           | 8              | 2012     | 50        | 6           | 170           | 3              | 2012     | 50        | 7           | 315           | 3              | 2012     | 50        | 8           |
| 90            | 4              | 1610     | 42        | 6           | 118           | 9              | 2012     | 50        | 6           | 170           | 4              | 2012     | 50        | 7           | 315           | 4              | 2012     | 50        | 8           |
| 90            | 5              | 1610     | 42        | 6           | 118           | 10             | 2012     | 50        | 6           | 170           | 5              | 2012     | 50        | 7           | 315           | 5              | 2012     | 50        | 8           |

**TB PULLEYS**

**TB PULLEYS - for SPA & A Belts**

| Pitch Dia (P) | NO. of Grooves | BUSH NO. | Max. Bore | Pulley Type | Pitch Dia (P) | NO. of Grooves | BUSH NO. | Max. Bore | Pulley Type | Pitch Dia (P) | NO. of Grooves | BUSH NO. | Max. Bore | Pulley Type | Pitch Dia (P) | NO. of Grooves | BUSH NO. | Max. Bore | Pulley Type |
|---------------|----------------|----------|-----------|-------------|---------------|----------------|----------|-----------|-------------|---------------|----------------|----------|-----------|-------------|---------------|----------------|----------|-----------|-------------|
| 71            | 1              | 1008     | 28        | 1           | 118           | 1              | 1610     | 42        | 1           | 190           | 1              | 1610     | 42        | 9           | 315           | 1              | 2012     | 50        | 9           |
| 71            | 2              | 1108     | 28        | 6           | 118           | 2              | 1610     | 42        | 6           | 190           | 2              | 2012     | 50        | 10          | 315           | 2              | 2012     | 50        | 9           |
| 71            | 3              | 1008     | 28        | 6           | 118           | 3              | 2012     | 50        | 6           | 190           | 3              | 2012     | 50        | 10          | 315           | 3              | 3020     | 75        | 7           |
| 75            | 1              | 1108     | 28        | 1           | 118           | 4              | 1610     | 42        | 1           | 190           | 4              | 2012     | 50        | 11          | 315           | 4              | 3020     | 75        | 7           |
| 75            | 2              | 1108     | 28        | 6           | 125           | 1              | 1610     | 42        | 1           | 200           | 1              | 2012     | 50        | 8           | 355           | 1              | 2012     | 50        | 9           |
| 75            | 3              | 1108     | 28        | 6           | 125           | 2              | 2012     | 50        | 2           | 200           | 2              | 2012     | 50        | 8           | 355           | 2              | 3020     | 75        | 9           |
| 80            | 1              | 1210     | 32        | 1           | 125           | 3              | 2012     | 50        | 2           | 200           | 3              | 3020     | 75        | 2           | 355           | 3              | 3020     | 75        | 9           |
| 80            | 2              | 1210     | 32        | 6           | 132           | 1              | 1610     | 42        | 1           | 212           | 1              | 2012     | 50        | 9           | 400           | 1              | 2012     | 50        | 9           |
| 80            | 3              | 1210     | 32        | 6           | 132           | 2              | 2012     | 50        | 2           | 212           | 2              | 2012     | 50        | 9           | 400           | 2              | 2012     | 50        | 9           |
| 85            | 1              | 1210     | 32        | 1           | 140           | 1              | 1610     | 42        | 1           | 224           | 1              | 2012     | 50        | 9           | 400           | 3              | 3020     | 75        | 5           |
| 85            | 2              | 1210     | 32        | 6           | 140           | 2              | 2012     | 50        | 2           | 224           | 2              | 2012     | 50        | 9           | 400           | 4              | 3020     | 75        | 5           |
| 85            | 3              | 1210     | 32        | 6           | 140           | 3              | 2012     | 50        | 2           | 224           | 3              | 2012     | 50        | 9           | 400           | 5              | 3020     | 75        | 5           |
| 90            | 1              | 1210     | 32        | 1           | 140           | 4              | 2012     | 50        | 2           | 224           | 4              | 3020     | 75        | 2           | 450           | 1              | 2012     | 50        | 9           |
| 90            | 2              | 1610     | 42        | 6           | 140           | 5              | 2012     | 50        | 2           | 236           | 1              | 2012     | 50        | 9           | 450           | 2              | 2012     | 50        | 9           |
| 90            | 3              | 1610     | 42        | 6           | 140           | 6              | 2012     | 50        | 2           | 236           | 2              | 2012     | 50        | 9           | 450           | 3              | 3020     | 75        | 5           |
| 90            | 4              | 1610     | 42        | 6           | 150           | 1              | 1610     | 42        | 1           | 236           | 3              | 3020     | 75        | 2           | 500           | 2              | 2517     | 65        | 9           |
| 95            | 1              | 1210     | 32        | 1           | 150           | 1              | 1610     | 42        | 1           | 250           | 1              | 2012     | 50        | 8           | 500           | 3              | 3020     | 75        | 9           |
| 95            | 2              | 1610     | 42        | 6           | 150           | 2              | 2012     | 50        | 2           | 250           | 2              | 2012     | 50        | 8           | 500           | 4              | 3020     | 75        | 9           |
| 95            | 3              | 1610     | 42        | 6           | 150           | 3              | 2012     | 50        | 2           | 250           | 3              | 3020     | 75        | 7           | 560           | 1              | 3020     | 50        | 9           |
| 95            | 4              | 1610     | 42        | 6           | 150           | 4              | 2012     | 50        | 2           | 250           | 4              | 3020     | 75        | 7           | 560           | 2              | 2012     | 65        | 4           |
| 100           | 1              | 1610     | 42        | 1           | 170           | 1              | 1610     | 42        | 1           | 280           | 1              | 2012     | 50        | 8           | 630           | 2              | 2517     | 65        | 4           |
| 100           | 2              | 1610     | 42        | 6           | 170           | 2              | 2012     | 50        | 2           | 280           | 2              | 2012     | 50        | 8           | 630           | 3              | 3020     | 75        | 9           |
| 100           | 3              | 1610     | 42        | 6           | 170           | 3              | 2012     | 50        | 2           | 280           | 3              | 3020     | 75        | 7           | 630           | 4              | 3535     | 90        | 4           |
| 106           | 1              | 1610     | 42        | 1           | 180           | 1              | 1610     | 42        | 1           | 300           | 1              | 2012     | 50        | 9           | 800           | 2              | 3535     | 90        | 4           |
| 106           | 2              | 1610     | 42        | 1           | 180           | 2              | 2012     | 50        | 2           | 300           | 2              | 2012     | 50        | 9           | 800           | 3              | 3535     | 90        | 4           |
| 106           | 3              | 1610     | 42        | 1           | 180           | 3              | 2012     | 50        | 2           | 300           | 3              | 3020     | 75        | 7           | 800           | 4              | 3535     | 90        | 4           |

**TB PULLEYS - for SPB & B Belts**

| Pitch Dia (P) | NO. of Grooves | BUSH NO. | Max. Bore | Pulley Type | Pitch Dia (P) | NO. of Grooves | BUSH NO. | Max. Bore | Pulley Type | Pitch Dia (P) | NO. of Grooves | BUSH NO. | Max. Bore | Pulley Type | Pitch Dia (P) | NO. of Grooves | BUSH NO. | Max. Bore | Pulley Type |
|---------------|----------------|----------|-----------|-------------|---------------|----------------|----------|-----------|-------------|---------------|----------------|----------|-----------|-------------|---------------|----------------|----------|-----------|-------------|
| 100           | 1              | 1610     | 42        | 1           | 160           | 1              | 1610     | 42        | 1           | 355           | 2              | 3020     | 75        | 8           | 224           | 4              | 3020     | 75        | 3           |
| 100           | 2              | 1610     | 42        | 6           | 160           | 2              | 2012     | 50        | 2           | 355           | 3              | 3020     | 75        | 7           | 224           | 5              | 3020     | 75        | 3           |
| 100           | 3              | 1610     | 42        | 6           | 160           | 3              | 2012     | 50        | 2           | 355           | 4              | 3020     | 75        | 7           | 224           | 6              | 2012     | 50        | 8           |
| 106           | 1              | 1610     | 42        | 1           | 160           | 4              | 2012     | 50        | 2           | 355           | 5              | 3525     | 90        | 7           | 236           | 7              | 2517     | 65        | 3           |
| 106           | 2              | 1610     | 42        | 6           | 160           | 5              | 2012     | 50        | 2           | 355           | 6              | 3525     | 90        | 7           | 236           | 8              | 3020     | 75        | 3           |
| 106           | 3              | 1610     | 42        | 6           | 170           | 1              | 1610     | 42        | 1           | 375           | 2              | 3020     | 75        | 8           | 236           | 9              | 3020     | 75        | 3           |
| 112           | 1              | 1610     | 42        | 1           | 170           | 2              | 2012     | 50        | 2           | 375           | 3              | 3020     | 75        | 7           | 236           | 10             | 3020     | 75        | 3           |
| 112           | 2              | 1610     | 42        | 6           | 170           | 3              | 2012     | 50        | 2           | 375           | 4              | 3020     | 75        | 7           | 250           | 1              | 2012     | 50        | 8           |
| 112           | 3              | 1610     | 42        | 6           | 170           | 4              | 2012     | 50        | 2           | 375           | 5              | 3525     | 90        | 7           | 250           | 2              | 2517     | 65        | 8           |
| 118           | 1              | 1610     | 42        | 1           | 170           | 5              | 2012     | 50        | 2           | 375           | 6              | 3525     | 90        | 7           | 250           | 3              | 3020     | 75        | 10          |
| 118           | 2              | 1610     | 42        | 6           | 180           | 1              | 1610     | 42        | 1           | 400           | 1              | 3020     | 75        | 8           | 250           | 4              | 3020     | 75        | 10          |
| 118           | 3              | 1610     | 42        | 6           | 180           | 2              | 2012     | 50        | 2           | 400           | 2              | 3020     | 75        | 8           | 250           | 5              | 3020     | 75        | 10          |
| 118           | 4              | 1610     | 42        | 6           | 180           | 3              | 2012     | 50        | 2           | 400           | 3              | 3525     | 90        | 7           | 280           | 1              | 2012     | 50        | 8           |
| 125           | 1              | 1610     | 42        | 1           | 180           | 4              | 2012     | 50        | 2           | 400           | 4              | 3525     | 90        | 7           | 280           | 2              | 2517     | 65        | 9           |
| 125           | 2              | 2012     | 50        | 2           | 180           | 5              | 2012     | 50        | 2           | 400           | 5              | 3525     | 90        | 7           | 280           | 3              | 3020     | 75        | 7           |
| 125           | 3              | 2012     | 50        | 2           | 190           | 1              | 1610     | 42        | 1           | 450           | 1              | 3020     | 75        | 8           | 280           | 4              | 3020     | 75        | 7           |
| 125           | 4              | 2012     | 50        | 2           | 190           | 2              | 2012     | 50        | 2           | 450           | 2              | 3525     | 90        | 9           | 280           | 5              | 3525     | 90        | 7           |
| 125           | 5              | 2012     | 50        | 2           | 190           | 3              | 2012     | 50        | 2           | 450           | 3              | 3525     | 90        | 9           | 280           | 6              | 3525     | 90        | 7           |
| 132           | 1              | 1610     | 42        | 1           | 190           | 4              | 2012     | 50        | 2           | 450           | 4              | 3525     | 90        | 10          | 300           | 1              | 2012     | 50        | 9           |
| 132           | 2              | 2012     | 50        | 2           | 190           | 5              | 2012     | 50        | 2           | 450           | 5              | 3525     | 90        | 10          | 300           | 2              | 2517     | 65        | 7           |
| 132           | 3              | 2012     | 50        | 2           | 200           | 1              | 2012     | 50        | 2           | 500           | 1              | 3020     | 75        |             |               |                |          |           |             |